

SOLBRIDGE

INTERNATIONAL SCHOOL OF BUSINESS

2015 EDUCATING THE NEXT GENERATION OF ASIAN THOUGHT LEADERS



www.solbridge.ac.kr





A Sea of Inspiration: A Young Man and His Dream

The story of the Woosong Educational Foundation may be traced back to the time when a young Korean man once met the commander of a ship on his way to Japan. The long and tiring journey seemed less taxing whenever he had the chance to speak to the ship captain and learn something new every time. The ship master made his living by trading seafood with other countries. For him, the lack of natural resources in both Japan and Korea naturally encouraged their citizens to engage in international trading. He firmly believed that educating the people to do business was important for the successful economic development of a nation. In his own words: "This ship may be built in one year, but it takes twenty years to train a good captain." The young Korean man looked far into the wide sea and, once alone, in solitude and freedom, he formulated his own dream: "Developing Korean society through education."

The Dong-A Pencil Corp

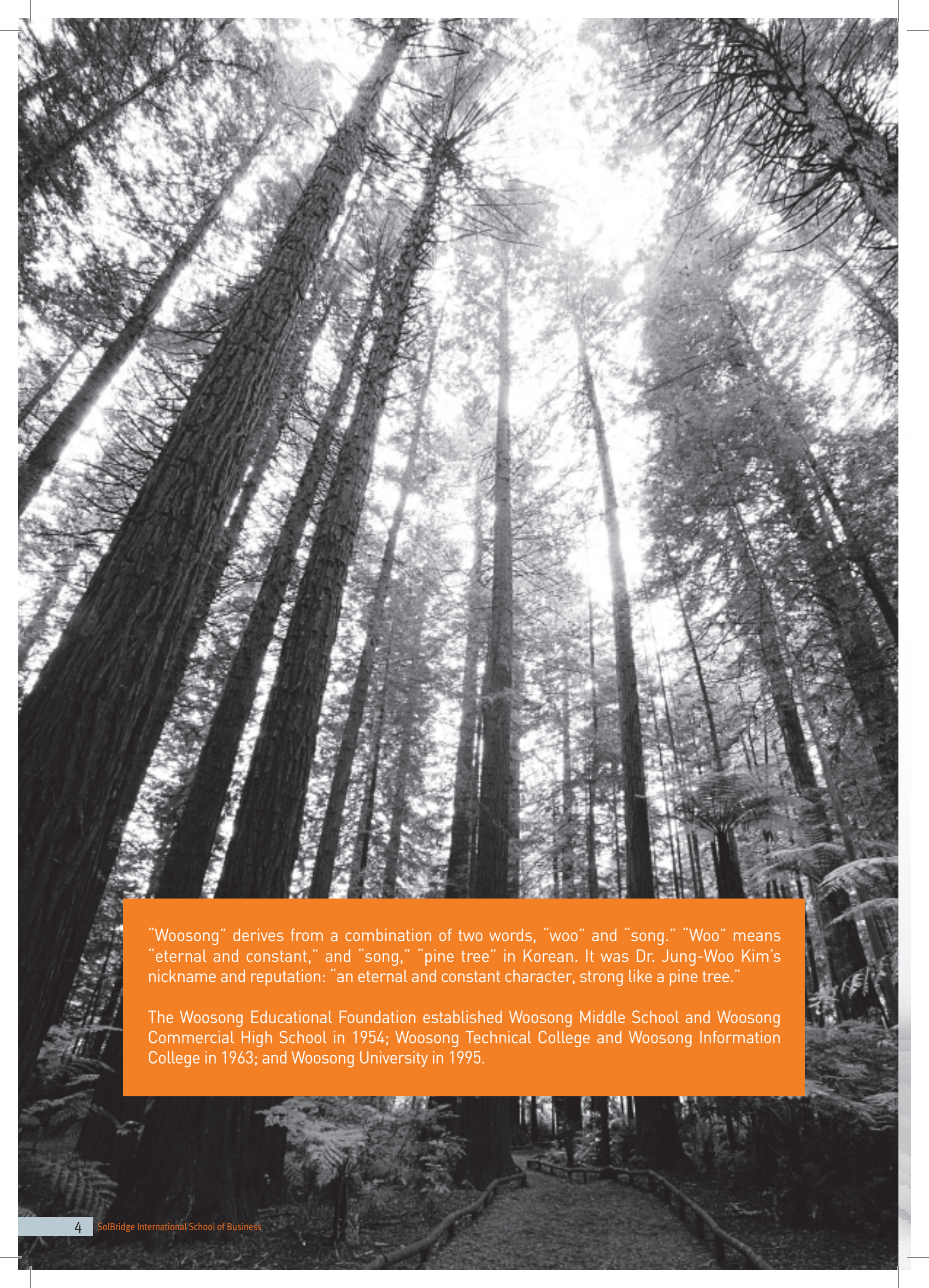
The young Korean man, Dr. Jung-Woo Kim, returned to his home country after completing his studies in Japan, and founded the Dong-A Pencil Corp. in 1948, the first stationery manufacturer in Korea. He believed that the supply of pencils to students would support their education. He worked hard to develop the company and provide high quality educational materials for all Koreans. Unfortunately, when the Korean War (1950-53) broke out, the factory was destroyed and the company went bankrupt.



The Dong-A Pencil Company in 1948: Current location of SolBridge International School of Business
Dr. Jung-Woo Kim is the fourth in the front row.

First Steps

The war left the country in very poor conditions. Compared to other cities in Korea, Daejeon was one of the worst. Elementary schools were overcrowded and in deteriorating conditions, and many Koreans did not dream of completing their studies, being more concerned with making ends meet on a day-to-day basis. Dr. Jung-Woo Kim established the Woosong Educational Foundation in 1954 and a commercial high school thereafter in order to teach practical and transferrable skills to the young generation. This was a meaningful transformation from a stationary business to an educational foundation. According to Dr. Kim, young Korean men and women at the time were capable of and in desperate need of technical knowledge more than intellectual knowledge as getting a job was their priority. Rebuilding the Korean economy through education was a must for Dr. Jung-Woo Kim.



“Woosong” derives from a combination of two words, “woo” and “song.” “Woo” means “eternal and constant,” and “song,” “pine tree” in Korean. It was Dr. Jung-Woo Kim’s nickname and reputation: “an eternal and constant character, strong like a pine tree.”

The Woosong Educational Foundation established Woosong Middle School and Woosong Commercial High School in 1954; Woosong Technical College and Woosong Information College in 1963; and Woosong University in 1995.

GOING GLOBAL




Sung-Kyung Kim, Ph.D.

Chairman, Woosong Educational Foundation

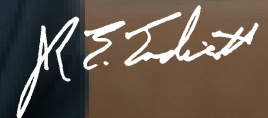
Dr. Sung-Kyung Kim was appointed President of Woosong University in 1995 and opened his inaugural ceremony by promising to make a “proper university” and stating that the “direction of Korea and that of the Woosong Educational Foundation was to be found in Asia.” As such, he travelled around the continent and signed various MoUs with universities in Japan, China, and other countries nearby. In 2004, he established the Nanjing IT Center in Nanjing, China, and the KOVIT IT Center in Ho Chi Minh City, Vietnam. President Kim donated many educational supplies and supported various programs for national universities in Laos and Cambodia. In 2005, he became the Chairman of the Woosong Educational Foundation after his late father, Dr. Jung-Woo Kim.

In order to go global, Chairman Kim established SolBridge International School of Business in 2007 to serve as the Asian Center of Excellence in Global Business Education (vision) by Educating the Next Generation of Asian Thought Leaders (mission). It was named “SolBridge” after the Korean “Sol” (or “song”/alternative pronunciation), “pine tree,” and the English “Bridge,” a strong bridge between Korea and the rest of the world. The initial concept was first formulated in the 1980s but had to wait almost 20 years to come true. His idea was too ahead of his time. Many people could not understand what an “international education” meant or was all about. SolBridge International School of Business was indeed Dr. Sung-Kyung Kim’s masterpiece. “I still haven’t completed the homework and tasks that my father left behind. We look forward to becoming the best international business school in Asia.”

A portrait of John E. Endicott, an older man with white hair, wearing a dark suit, white shirt, and a red and black striped tie. He is smiling slightly and looking towards the camera. The background is a blurred office setting with bookshelves.

John E. Endicott

President, Woosong University
Vice-Chancellor, SolBridge International School of Business

A handwritten signature in black ink that reads "John E. Endicott".

Toward “Neighborhood Asia” and a Globalized Korea

I am honored to be given the opportunity to lead SolBridge International School of Business as it begins its eighth year, a school standing on the shoulders of the accomplishments of the Woosong Education Foundation. Created in 1954, the foundation marks its 60th anniversary during which time it has sponsored educational programs and experiences at all levels of instruction. In fact, some 300,000 students have had a Woosong experience over these past 60 years.

Since 1995, the year of its founding, Woosong University has earned a reputation for excellence in preparing students for the full spectrum of rewarding careers. The creation of SolBridge was a natural extension of the academic activism seen here throughout the city of Daejeon – the home of 17 colleges and universities and 35 government and private sector research institutes.

With your assistance and wholehearted support, I intend to use the uniquely global aspect of SolBridge to gain worldwide attention for our faculty and students. Expect our faculty to excel in teaching and produce world-class research that will be presented throughout the academic community while our students earn a new reputation for intellectual inquiry and innovative thought. Look for SolBridge to participate in and support international activities that will help in the creation of a new “Neighborhood Asia” so that SolBridge graduates will have a strong understanding of the social responsibility of business leaders.

Our innovative model envisages SolBridge-sponsored campuses in other parts of Asia and participation in

student / faculty exchange programs throughout the world, as well as dual degree programs and tripartite educational opportunities. This model reveals a degree of academic leadership unparalleled on the Korean peninsula. Working together, our faculty and students will drive for a more prosperous Asia-Pacific region based on knowledge, integrity, excellence, creativity, diversity, flexibility, and innovation.

Over the past seven years we have integrated a series of bold innovations into the university as a whole and now stand as one of the most “benchmarked” institutions in Korea. One of our achievements that reflect the great team work that characterizes our faculty-staff-administration-student team was our accreditation by the internationally renowned Association to Advance Colleges and Schools of Business, AACSB. Only five percent of the world’s business schools receive this honor, and SolBridge is the only school in Korea offering an all English curriculum with AACSB accreditation.

Our mission is to jointly educate the next generation of Asian thought leaders and bring a new awareness of the benefits of interactive education to the rest of Korea, Asia, and the world. Our message is that here in Daejeon there is a new institution dedicated to producing the best participants possible for the leadership in the global economy.

Welcome! Together we will work for a better world.

Our Vision

Asian Center of Excellence in Global Business Education

Our Mission

Educating the Next Generation of Asian Thought Leaders

AACSB

In May, 2014, SolBridge received AACSB accreditation. We are the youngest institute ever to have received AACSB accreditation, and we here at SolBridge are very proud of that. We obtained AACSB in four and a half years, a remarkably short time. SolBridge made a promise to its students and their parents: to deliver to them the best business education possible.



AACSB - accredited schools have the highest quality faculty, relevant and challenging curriculum, and provide educational and career opportunities that are not found at other business schools.

AACSB accreditation represents the highest standard of achievement for business schools worldwide. Less than 5% of the world's 13,000 business programs have earned AACSB accreditation. AACSB - accredited schools produce graduates that are highly skilled and more desirable to employers. *

* From - <http://accredited.aacsb.edu/>



UNIQUE AMONG BUSINESS SCHOOLS

SolBridge prepares students to be the next generation of Asian 'Thought Leaders' in the fast growing and rapidly changing Asian economy. SolBridge is unique among business schools for several reasons:

- All courses are taught in English
- 80% of faculty are international professors with degrees from prestigious universities
- Students are taught under an international business teaching model
- A strong focus on business in Asia is cultivated through diverse academic and cultural programs including the requirement for BBA students to learn a third language
- An international student body in attendance with over 75% coming from 30+ countries
- A balance is maintained between theory and practice through immersion programs, special lectures, certificate programs, workshops, site visits, and internships
- Our **G.A.C.C.S.** promise – we provide students with:
 - **G**lobal Perspective
 - **A**asian Expertise
 - **C**reative Management Foundation
 - **C**ross Cultural Competence
 - **S**ocial Responsibility

Accreditation

SolBridge is honored to be an AACSB certified school, but that is not our only accreditation. In accordance with Korean Ministry of Education regulations, SolBridge is nationally accredited. SolBridge is a member of the Association of Asia-Pacific Business Schools and the Eurasian Economic Scientist Society. Academic credits earned at SolBridge are transferable to other quality institutions of higher education.

SolBridge is certified by the International Education Quality Assurance System. This Korean accreditation body grants certification to 30 universities based on high standards of foreign student recruitment, retention, management, and service.

AN INTERNATIONAL FACULTY

SolBridge has brought together a remarkable faculty with extensive expertise. Faculty members deliver a world class education tailored for our students. Our program is eminently international in perspective, offering top-flight instruction and hands-on training in the critical aspects of contemporary business practice with a focus on doing business in Asia

Kwame Agyei Mensah DBA
SMC University, Switzerland

Aye Mengistu Alemu Ph.D
Ritsumeikan Asia Pacific University, Japan

Mahmood Awan Ph.D
Northcentral University, USA

Jason Cordier PGDip BusAdmin
Massey University, New Zealand

Robert (Bob) W Graff MBA
University of Minnesota Carlson School of Management, USA

Tahir Hameed PH.D PE
Technology, KAIST, Korea

Han-Chiang Ho Ph.D
Carlos III University of Madrid, Spain

Chia-Hsing Huang Ph.D
University of Pennsylvania, USA

Jin-Sung Kim Ph.D
University of Kansas, USA

Sung-Tae Kim Ph.D
Management, University of Nebraska-Lincoln, USA

Rao N. Kowtha Ph.D
Texas A&M University, USA

William Patrick Leonard Ph.D
University of Pittsburgh, USA

Alejandra Marin Ph.D
Texas Tech University, USA

Prasad Padmanabhan Ph.D
McGill University, Canada

Joshua Park J.D.
Harvard Law School, USA

Sang-Chun Rah Sc.D
Massachusetts Institute of Technology, USA

Chang-Seop Rhee Ph.D
Korea University, Korea

Young-Hack Song Ph.D
Brigham Young University, USA

Brock M. Stout Ph.D
University of Mississippi, USA

Bobby Swar Ph.D
KAIST, Korea

Peter Von Staden Ph.D
The London School of Economics, UK

Young-Ho Sorn Ph.D
Marketing, Yonsei University, South Korea



THE FACILITY



State of the Art Classrooms



A Multimedia Conference Room



Computer Labs



Fitness Center



Library



Student Cafeteria



Coffee Shop



Two Restaurants

The seventeen-story SolBridge complex in downtown Daejeon (conveniently located near Daejeon train station) is one of the most modern teaching campuses in Korea, boasting many facilities which can be seen on these two pages.

SolBridge has more. Being part of the Woosong Educational Foundation, students can access the nearby Woosong University campus which has numerous fitness facilities, additional libraries, language laboratories, and international-standard residences.



SolBridge Swimming Pool



Woosong University's Administration Building



Woosong University's Sports Stadium

THE SOLBRIDGE BUSINESS NETWORK

SolBridge is proud of the Business Network it has assembled. At SolBridge, we work hard to ensure that students not only receive outstanding instruction, but are involved in career-building dialogue with industry, government, and other academic institutions around the world. This makes SolBridge a unique environment for studying with its fast track for advancement.



Corporate Advisory Council

The Corporate Advisory Council (C.A.C.) consists of senior executives who believe in SolBridge's mission of educating the next generation of Asian thought leaders. These executives have in-depth knowledge and experience in business throughout Asia. The C.A.C. helps SolBridge by:

1. Reviewing the SolBridge curriculum to ensure relevancy to current and expected future needs of business leaders in Asia.
2. Meeting with SolBridge students to share their executive experience and to advise them on preparation for successful careers in business.
3. Providing internships to students' which are relevant to their career choice and offering placement opportunities to SolBridge graduates.

Current members of SolBridge's Corporate Advisory Council; ESTEE LAUDER COMPANIES (Korea), AIG Global Real Estate (Korea), Bank of New York, Mellon (Korea), Korea Research Institute of Bioscience and Biotechnology, Danone (United States, Korea), M.K. International Inc. (Korea), Tyco Security Solutions ADT (Korea), Seoul Global Center (Korea), HR Group SK Telecom (Korea), Robert Bosch Korea Ltd., International Research and Consulting (Korea), Delta (United States), New Paradigm Institute Hansoll Textile Ltd. (Korea), Nestle (Korea, Japan), Benchmark Partners (Korea), and George Peterson, member emeritus.



Friends of SolBridge

Many successful companies in Korea have become 'Friends of SolBridge' by associating with SolBridge on a variety of levels. This group of companies actively contributes to SolBridge through our Platinum Lecture series, internships, and job placements.

Friends of SolBridge include: Samsung Asset Management, Samsung Electronics, Samsung SDI, Posco, LG Academy, LG Display, LG U+, LG Chemical, LG Electronics, Bumban Pantos, Hyundai Card, Maeil Business Newspaper, Nike Sports Korea, BASF Korea, Korea Tourism Organization, Eighth Army, B Braun Korea, S-Oil, and Macquarie Group of Companies Korea.

CEO Mentoring Program

Many 'Friends of SolBridge' also participate in our CEO Mentoring program. Through the guidance of their mentors, select BBA and MBA students will gain valuable insights from experts at global corporations within Asia. These insights will better equip students to deal with real life business decisions they will be making in their future professions.

SolBridge's C.A.P. Program

SolBridge's C.A.P. program is something we are very proud of here at SolBridge. C.A.P., or Career Advisor Professor, is a program which ensures that every freshman entering SolBridge will have a SolBridge professor from their area of the world as a career advisor. The professor will discuss with the student their specific academic needs at SolBridge, give advice on which courses to take, and assist the student in the creation of their own personalized career plan. Your C.A.P. will help you, in conjunction with our C.D.C. (Career Development Center), find job opportunities upon graduation from SolBridge. C.A.P. is not limited to four years; we expect our graduates to keep in touch with SolBridge long after they have graduated. The first piece of advice your C.A.P. will give you is: if you would like a job opportunity at a Korean company, either in Korea or overseas, your Korean needs to be as good as your English when you graduate. Our Korean classes are here to help you make that happen.





A STRATEGIC LOCATION

SolBridge is located in Daejeon, Republic of Korea, a city at the crossroads of Korea's expressway and railway systems and the location of Korea's 'Silicon Valley' commonly known as Daedeok Innopolis.

Daedeok Innopolis is a 30+ year old world-class research cluster which has been largely responsible for the explosive growth of basic science and venture business in Korea which has positioned Korea to be a technological leader of the 21st century.

Facts about Daedeok Innopolis

- Over 900 high technology firms
- 60 educational and government-run institutions and corporate research centers
- More than 7,500 researchers holding doctorate degrees

SolBridge has collaborated with many of these industry leaders to provide opportunities for student internships and future graduate placements to help prepare our graduates for the business world.

In addition to being known as a city of science and education, Daejeon is surrounded by beautiful forests, mountains, and lakes. Numerous parks, art centers, and museums as well as sports facilities establish a healthy balance of business and environmental harmony. A variety of efficient transportation services are also available, so students can travel easily around the city.



ACADEMIC DEGREE PROGRAMS

Bachelor's Degree in Business Administration (BBA).

The SolBridge BBA curriculum is designed to prepare our graduates to excel as thought leaders in Asian business. Students specialize in a traditional business area such as Marketing, Finance, or Management. To ensure our graduates have a competitive edge, they will also complete a minor in Korean or Chinese.

Internships

BBA students who find a job which is officially or formally appointed, are permitted to work their last semester. This work experience earns them up to 18 free elective credits thus allowing them to enter the work force earlier. Other BBA students may qualify for an internship during a summer or winter intersession to earn up to 6 credits through work experience.

Academic Schedule

Spring Semester	15 weeks
Summer Study Intersession	6 weeks
Summer Break	4 weeks
Fall Semester	15 weeks
Winter Study Intersession	6 weeks
Winter Break	6 weeks

Program Requirements

Required Business Courses:	71
Specialization Business Electives:	12
Korean or Chinese:	21
Other Business Electives / General Education:	36



An MBA for Leaders of Today and Tomorrow

The SolBridge Masters of Business Administration degree prepares graduates for leading the organizations of the future. The MBA program is designed to give our students a solid foundation in business fundamentals in addition to the soft skills needed in today's work place. This combination ensures our graduates will be ready to take on the challenges of managing a business in any part of the world.

Students have to complete 48 credits of course work in order to graduate. The core curriculum of 9 courses lays strong business foundations while 12 elective credits can be taken to learn various aspects of business: administration, management and operations.

There are three areas of specialization: Management, Finance, and Marketing. Students can also decide to receive a general degree by getting an overview of all three specializations.

Students may choose to finish in eighteen months or twenty four months. There is no difference in the tuition between these options. Students who opt for eighteen months will have to take courses offered during the regular semesters in addition to three winter and three summer intersessions.

Language courses are provided on the SolBridge campus where students can choose to study Chinese or Korean during their stay at SolBridge. However, such study is optional and should not conflict with the program of study.

MBA students can work their last semester in place of taking classes. Their work experience may earn them up to 9 free elective credits allowing them to enter the work force prior to graduation. It may also be possible for MBA students to be accepted for an internship during our summer or winter intersessions to simultaneously earn credits and gain work experience.

Program Requirements (48 Credits)

Core business courses:	27
Specialization:	9
Free Electives:	12



SolBridge Asian Thought Leaders Case Competition

A popular activity here at SolBridge is our Asian Thought Leaders Case Competition. This event is held every semester at SolBridge. SolBridge students are assisted by mentors with expertise in countries such as China, India, Indonesia, and Vietnam to prepare case studies on these countries. The competition is friendly and rewarding as students compete for a variety of prizes as they refine the real world skills they will need when they enter the work force.

SolBridge International Business Case Competition

SolBridge's mission of educating the next generation of Asian thought leaders and the internal success of our case competition produced the next logical step: preparing our students for the international world. One of the highlights of each semester is our International Business Case Competition where SolBridge students are joined with students from our different partner universities around the world, put into teams, and are given a real world problem from a Korean company. Students present their solutions through analysis and team work under the guidance of SolBridge professors. Through this International Business Competition, SolBridge helps to enhance collaboration among other business schools, create a global network among tomorrow's thought leaders, and prepare our students for a bright future in the globalized economy.



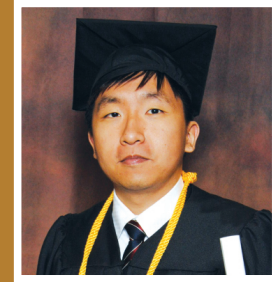
Joint Programs

Outbound 2+2 programs

SolBridge offers 2+2 outbound programs to its students. Students can receive 2 degrees by their graduation date by first studying at SolBridge for two years and then moving on to a partner university (for example Beijing Foreign University or Georgia Institute of Technology) for their last two years of study. Upon completion of 4 years of study, students will be awarded a degree both from SolBridge and the attended partner university.

These programs are especially attractive to students who wish to earn a degree in the United States, but prefer to stay closer to home initially or who wish to save study costs by studying for two years at SolBridge. Substantial savings can be realized by pursuing 2+2 programs.

“The transition turned out to be smoother than expected. The environment at Georgia Tech was not that different from SolBridge. English was not a big problem anymore. I was able to handle it better than Koreans I met in the States. They were surprised when I told them I wasn’t taking any ESL classes, nor lived or studied overseas before. Thanks to my two years at SolBridge, studying at Georgia Tech was a dream come true.” – Hyun-Gook Kang



Inbound 2+2 programs

SolBridge has a number of inbound 2+2 programs with quality partner institutions in China, Indonesia, Vietnam and Russia. Institutions who teach in English or who educate students in another language (but whose students have strong English skills) are welcome to join our programs. SolBridge has successfully created a multi-national environment using an American business curriculum, with a focus on business in Asia. SolBridge provides an excellent choice for students wishing to work in Asia or to be employed by companies with interests in Asia. The first one or two years of will be at the partner institution Bachelor’s program which is articulated with the SolBridge curriculum and students know from the outset what courses are transferable to SolBridge.

MBA Joint Programs, 1+1

SolBridge has established 1+1 programs with quality institutions for dual degrees at the Master’s Level. Meiji University in Japan and Valparaiso University in the USA are examples of these programs which combine the best of two worlds and provide excellent choices for students interested in a transnational Master’s degree.



CAMPUS LIFE

Academic Affairs & Student Services

SolBridge Academic Affairs and Student Services assist students with settling into their new lives at SolBridge. It organizes excursions and intercultural events throughout the year, making sure every student makes the most out of their stay in SolBridge and in Korea. The office, in conjunction with our faculty members, works on an ongoing basis to provide students with programs and activities that encourage our SolBridge spirit, cultural sensitivity, academic excellence, and social interaction.



SolBridge Student Council

SolBridge has an active student council which helps organize student activities, represents students' interests to the administration and encourages members to further develop their leadership skills.



Student Employment

A limited number of part-time jobs are available at SolBridge to enable students the opportunity to earn some money and gain work experience. Jobs are available in the cafeteria, gym, library, administration office, dormitories, or as a research assistant to a faculty member. The Career Development Center offers help to students to get internships and job placements.



Peer Group Program

Team-Building begins during our student Orientation program. SolBridge Peer Group program is an extension of our Team-Building and is a peer mentoring program designed to assist our incoming students in adjusting to their new environment. The Peer Group program strives to help new students cope with foreseeable and unpredictable challenges while studying at SolBridge.



Health Services

Hospitals and medical services are modern, efficient, and provide excellent health care. Students are required to purchase health insurance when they enroll at SolBridge. Should a student need medical attention while in Korea, the insurance allows for use of medical facilities at a significantly reduced cost.



SolBridge Writing Center

Our language here at SolBridge is English which means all written assignments are in English. At the Writing Center, with the support of a SolBridge faculty member, SolBridge students working as trained tutors assist students with their written assignments. This assistance includes help for professional letters, resumes, presentations, and research papers. The Writing Center supports SolBridge students in any way they can.



Exchange Students

SolBridge has many students who are on exchange programs from our partner universities. SolBridge students have the opportunity to take advantage of our various exchange programs to go abroad and study at one of our partner universities. This is a great way for our students to broaden their horizons and learn more about the world.

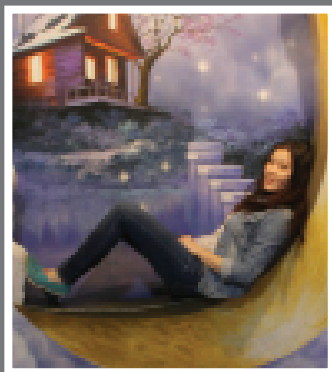


Transfer Students

Undergraduate students wishing to transfer to SolBridge from a recognized college or university are invited to apply and provide us with course descriptions and course syllabi along with official academic records which will be evaluated for transfer credit. Transfer students should have a minimum overall grade point average of C+. SolBridge will allow the transfer of courses in which students earned higher than a C grade which are similar in content and quality to those of SolBridge's required courses.



STUDENT TESTIMONIALS



I have been at SolBridge two years already as a regular student and I have never regretted coming here. Through different extracurricular activities and volunteer work, SolBridge helps us grow personally while improving skills which are invaluable to our future career. As SolBridge students, we have an opportunity to gain international experience and make friends from all over the world. In my case, I took advantage of the opportunity to become a member of Student Council and work a part-time job at SolBridge. My school life becomes more interesting and more rewarding each year. I know my last two years at SolBridge will be special.

Dameli Shedenova, Kazakhstan, BBA student



"Pursuing my MBA at SolBridge really gives me a deep insight into what a real business school is. I am so thankful to be part of this school which provides me the opportunity to cultivate my skills and knowledge towards my future path in marketing. SolBridge has provided a unique environment of business study in Korea. I have been inspired not only by all the very professional and supportive professors at SolBridge, but also by every international student sharing their own thoughts and experiences. Because of them, I became more energetic and developed my passion for this program. Spending every second of my time to study and enjoy a wonderful lifestyle here is such a beautiful record in my life.

To me, the most impressive thing about Korea is the natural beauty of every colorful mountain and the view of cherry blossoms in the spring. This amazing view is like an artful painting which always brightens up my smile every time I see it. Although the weather is a bit cold for me, I still truthfully love what I am doing here a lot."

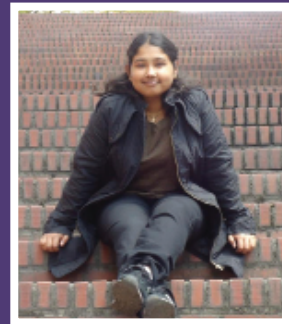
Leakhena Srey, Cambodia, MBA student

ALUMNI TESTIMONIALS

SolBridge has given me great experiences to make my dreams come true. SolBridge had become a spark to my life which is still igniting even now and made my academic and professional journey interesting. It has played a tremendous part in my life, a place where I realized dreams can be achievable, if you have a burning desire.

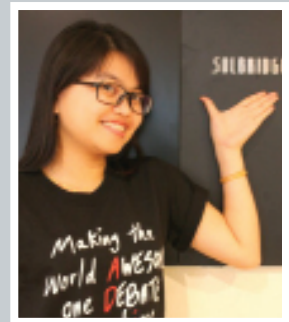
A good education is the best thing you can get to influence your future endeavors. My academic experience from SolBridge helped me to think and see things in different perspectives. I can definitely say that my time at SolBridge helped me to find the creative and valuable person within me. In SolBridge, I have learned the importance of true friendship and teamwork which stands on personal respect and trust. SolBridge was the place in which I was taught how to deal with the professional world through soft skills and good communication skills. Since August 2013, I have been working with LG Petrochemicals (India) Pvt. Ltd. I can say with confidence that SolBridge prepared me to face this phase of my life and has allowed me to follow my passion and dreams because of the academic and professional lessons learned at SolBridge.

Aloha!!



Agnus Susan Joshua, India, BBA graduate, Spring 2013.
Currently working at LG Petrochemicals (India) as a Business Process Executive

My time at SolBridge was priceless. After 3 and a half years, I grew up to become a lot more confident in drafting my career plan and expectations. Now that I have joined the business world, doing real jobs, I realize how valuable those classes at SolBridge are to business students. Classes at SolBridge are designed to train real business people. All the courses are highly informative and assignments are very applicable. Thanks to both the hard and soft skills I learned from classes and club activities, I adapted super-fast to the job I was offered even though I entered the company as an inexperienced employee. One extra spice that makes SolBridge a delicious choice is the living environment; Daejeon is a beautiful and peaceful city to live. SolBridge makes it comfortable and convenient for all foreign students to enjoy life in Korea despite the fact that most of us arrive with a limited ability to understand the Korean language. Looking back at my university life, I have to say my time at SolBridge remains as one of the most game-changing factors in my life. I am very happy to have made the best out of it and hope many others will find their time at SolBridge to be meaningful like I did.



Thanh Tra Nguyen, Vietnam. 2011 BBA Valedictorian.
Currently working at Samsung as a Marketing Professional, Korea.

“My SolBridge life was full of fun; for three and half years I studied at SolBridge and it changed me a lot. I like the multicultural environment there, everyone smiles in the same language. Besides, SolBridge provided us a lot of part-time opportunities to improve our personal abilities. For instance, the Teaching Assistant position helped me to improve my skills to deal with different kinds of problems, while the peer Group Leader experience gave me a chance to practice my leadership skills. I really appreciate these experiences which assisted me in my job hunt. SolBridge also opened various club activities after class to allow us to share our interests and meet new friends. I am proud to have been able to study at SolBridge and proud to be a SolBridger!”



Yin Mei, China, BBA Graduate, 2013 December.
Currently working at Samsung D'light VIP Relations, Korea

ADMISSION CRITERIA

SolBridge seeks motivated individuals from diverse social, economic, ethnic, and geographic backgrounds. Students at SolBridge are encouraged to bring their own diversity and experience into the classroom.

Admission to SolBridge is evaluated on a case-by-case basis taking into account the applicant's academic records, English proficiency, financial status, personal essay, extra-curricular activities, and letters of recommendation.

Admission is selective and students are urged to apply as early as possible to ensure sufficient time for application review, visa application, and moving preparations. The deadline for the Spring semester is January 2 and July 1 for the Fall semester.

General Requirements for Admission

(see website for details and further explanation)

- Academic record: GPA of C+ or better for BBA and MBA
- English proficiency (BBA): IELTS 5.5 or TOEFL 61
- English proficiency (MBA): IELTS 6.5 or TOEFL 79
- Online interview: an interview with a faculty member is required.
- Financial resources: sufficient funds need to be available to cover first year tuition and other fees.

Undergraduate applicants who provide English proficiency scores that meet admission criteria and pass the online interview will be considered for regular admission.

Scores lower than general admission requirements may qualify applicants for conditional acceptance based on the strength of the online interview. In such cases, students will be required to take additional English classes as electives during their first semester at SolBridge.



HOW TO APPLY

Application to SolBridge may be completed by using a downloadable form found on our website. The application form must be filled out completely, accurately, and submitted with the required supplementary material. Completed applications can be submitted by e-mail, post, or fax. Please refer to our website for the latest information (www.solbridge.ac.kr). Submission of any falsified documents will result in immediate termination of the application process and denial of admission.

Checklist of required items to apply:

- ▷ Application form, correctly and completely filled-in
- ▷ Copy of photo page of passport
- ▷ Transcripts (original or validated copies) – mid-year transcripts are acceptable for those about to graduate
- ▷ Proof of finances form with bank statement or bank letter
- ▷ Proof of English proficiency, TOEFL or IELTS
- ▷ Personal essay (hand written)
- ▷ Proof of high school diploma (BBA) or four year undergraduate degree (MBA)
- ▷ Letter of recommendation (BBA), two letters of recommendation (MBA)
- ▷ Résumé (MBA only)

Scholarships

Tuition scholarships are limited and competitive. Applicants requesting a scholarship must submit a scholarship application form. Initial tuition scholarships will be awarded for a one year period for BBA applicants, and a one semester period for MBA applicants. All applicants must have a minimum GPA of 3.75/4.5 to reapply for a merit scholarship following the completion of their initial scholarship cycle.

Tuition scholarships are awarded on the basis of academic performance, personal essay, letter(s) of recommendation, extra-curricular activities, transcripts, and the application itself. Applicants awarded a scholarship must still demonstrate sufficient proof of personal finances to enter SolBridge.



◎ *Send your completed application form and required supplemental material to:*

SolBridge International School of Business. 128 Uam-ro, Dong-gu, Daejeon, Korea, 300-814.

Tel: +82-42-630-8856 Fax: +82-42-630-8820 E-mail: info@solbridge.ac.kr

www.solbridge.ac.kr



Educating the Next Generation of Asian Thought Leaders



Postal address 128 Uam-ro, Dong-gu, Daejeon, Korea, 300-814.

Telephone +82-42-630-8856 **Fax** +82-42-630-8820 **E-mail** info@solbridge.ac.kr

Website www.solbridge.ac.kr



www.facebook.com/SolbridgeIR



[@SolBridge@SolBridge](https://twitter.com/SolBridge)